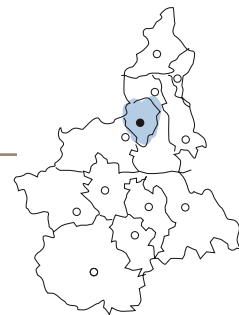


*turismabile*





# MANUFACTURES

## in Harmony with Nature



Located near Biella, a visit to the delightful park-garden Burcina is a must. The park consists of an entire hill, transformed at the end of the 1800s into magnificent botanical gardens. Easy for all to access, the park features panoramic tracks overlooking the slopes filled with flowers in bloom, as well as a restaurant serving traditional local cuisine located inside the grounds.

Alongside its natural beauty though, the Biella district also bears the vestiges of a great industrial past. The wealth of water here and the peculiar climate made the area a cradle of the textiles industry, and even today, Biella's woolen mills are renowned throughout the world. Some of the old, abandoned factories have been renovated to bring out their characteristic features from the dawn of the industrial revolution, thus constituting an interesting tour of industrial architecture surrounded by the natural splendour of the area. The first ever iron factories in the district were

built at the end of the sixteenth century in Netro. The old Rubino workshop has been transformed into a unique museum of great interest, housing a 1500-piece collection of old tools and machines. In Pray, the former Zignone woolen mill has been turned into the museum La Fabbrica della Ruota, featuring in its collection the original multilevel Manchester-style production system, and the remote power transmission system. The museum often hosts itinerant exhibitions and holds an important documentary archive.

leisure



Be swept away by the natural magnificence that abounds in Piedmont, from mountain peaks to sparkling lakes, picturesque landscapes and sweeping plains.

wellness



Rejuvenate the body and soul, treating yourself to a bit of rest and relaxation.

sport



Take up the challenge, in the footsteps of the Olympic champions that thrashed it out on the mountain slopes and playing fields of Piedmont.

food&wine



Savour the traditional, authentic flavours of Piedmont, accompanied by a fine drop of the world-famous local wine varieties.

art&culture



Discover and explore the history, artistic heritage and architectural splendours of Piedmont.

Wheelchair accessibility



*independent access*



*partial access/with assistance*

Aids for the blind and visually-impaired



*available*



*partially available*

Aids for the deaf



*available*



*partially available*

Availability of special menus



*yes, as recognised by relevant associations*



*upon request/booking*

Trained staff on hand to assist people with disabilities



*available*

Special tours available



*available*



## HOTEL

### Hotel Agorà Palace ★★★★★

Via Lamarmora 13/a, 13900 Biella  
Tel. +39 0158407324 [www.agorapalace.it](http://www.agorapalace.it)



### Hotel Ristorante Cascina Casazza ★★★★★

Via Garibaldi 5, 13876 Sandigliano (BI)  
Tel. +39 0152493330 [www.hotelcasazza.it](http://www.hotelcasazza.it)



### Green Park ★★★★★

Via Santhià 75, 13881 Cavaglia (BI)  
Tel. +39 0161966771  
[www.greenparkgolfhotel.com](http://www.greenparkgolfhotel.com)



### Hotel Bugella ★★★

Via Cottolengo 65, 13900 Biella  
Tel. +39 015406607  
[www.hotelbugella.it](http://www.hotelbugella.it)



### Hotel Lido ★★★

Viale Lido 28, 13886 Viverone (BI)  
Tel. +39 0161987014 [www.hotellidoviverone.it](http://www.hotellidoviverone.it)



### Hotel Royal ★★★

Lungo Lago 19, 13886 Viverone (BI)  
Tel. +39 0161987038 [www.hotelroyal.org](http://www.hotelroyal.org)



### Hotel Agata ★★

Strada alla Fornace 6/a, 13900 Biella  
Tel. +39 015405017 [www.hotelagata.it](http://www.hotelagata.it)



## HOTEL RESTAURANT

### Locanda della Stazione ★★★★★

Via Cesone 7, 13853 Lessona (BI)  
Tel. +39 015981132  
[www.locandadellastazione.com](http://www.locandadellastazione.com)



## RESIDENCE

### Il Cantuccio Petit Residence

Via Matteotti 10, Zubiena (BI)  
Tel. +39 015660228



## RESTAURANT

### Ristorante La Bessa

Fraz. San Sudario, 13887 Magnano (BI)  
Tel. +39 3391018807  
[www.ristorantelabessa.com](http://www.ristorantelabessa.com)



### Ristorante Rosa Bianca

Via Roma 10, 13812 Piedicavallo (BI)  
Tel. +39 015609100  
[www.rosabianca.com](http://www.rosabianca.com)



### Ristorante Casa Nostra

B.ta Molinetto 3, 13823 Strona (BI)  
Tel. +39 3402840921



## HOLIDAY HOME

### Ospizio Opera Pia Graglia Santuario

Via Campiglie 1, 13895 Graglia (BI)  
Tel. +39 3482703135



### Santuario Di Oropa

Via Sant. Oropa 480, 13900 Oropa (BI)  
Tel. +39 01525551200  
[www.santuariodioropa.it](http://www.santuariodioropa.it)



## WHAT TO SEE

### RISERVA NATURALE PARCO BURCINA

Casina Blu, 13814 Pollone (BI)  
Tel. +39 0152563007



### ECOMUSEO LAVORAZIONE FERRO EX OFFICINE NETRO

Via Rubino 7, 13896 Netro (BI)  
Tel. +39 3493269048



### FABBRICA DELLA RUOTA

13867 Pray (BI)  
Tel. +39 015766221



## TOURIST INFORMATION

### ATL Biella

Tel. +39 015351128  
[www.atl.biella.it](http://www.atl.biella.it)

### Biella Città Aperta

Guide to accessibility  
[www.comune.biella.it](http://www.comune.biella.it)

### Association "Turismo per Tutti"

Tel. +39 0115881968  
[www.turismopertutti.it](http://www.turismopertutti.it)

### Musei per Tutti

[www.museipertutti.it](http://www.museipertutti.it)

## TRANSPORT SERVICES

### Rete 119

Transport services equipped for people with disability  
Tel. +39 0110015320  
Toll Free Number 800890119 (from Italy only)

## MEDICAL SERVICES

### Dialysis Centre

Biella:  
Tel. +39 0153503223

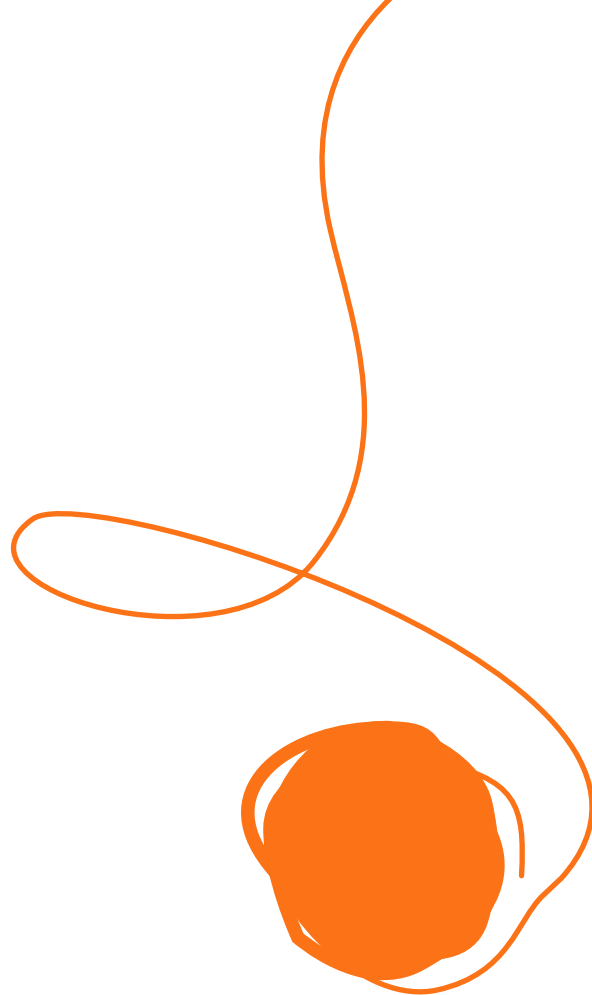
### Emergency Services

National Emergency Services  
Tel. 118

## USEFUL NUMBERS

### Consulta per le Persone in Difficoltà Onlus

Biella:  
Tel. +39 0158497377  
[www.cpdconsulta.it](http://www.cpdconsulta.it)



turismo per tutti in piemonte  
tourism for all in piedmont  
tourisme pour tous dans le piémont  
tourismus für alle im piemont



via San Marino 21/23 • 10134 Torino-Tel. +39 011.0015323 • Fax +39 011.0015324 • info@turismabile.it - www.turismabile.it